

Mecklenburg County Public Schools Organizational Chart
2020-21
Mecklenburg County School Board

Superintendent
Mr. Paul Nichols

Asst. Supt.
Abe Jeffers

Curriculum and Instruction
Joan Hite

Finance & Services
Christy Peffer

Facilities & Operations
Brian Dalton

Federal & Special
TBD

School Principals

Student Services
Mary Hodges

Personnel
TBD

Technology
Brook Hatcher

Food Services
Robin Moore

CTE
Coordinator

Fed. Prog.

4 ES

Psych.

Payroll

Techs

8 Cafe

Transportation
Supervisor

Assessment
Specialist

Compliance and Investigations

2 MS

Nurses

Accts Payable

ITRT

Maint.
Supervisor

Prof. Learning

Hearings & Truancy

2 HS

Social Work

Procurement

Data Spec.

Bus Shop

Policy, Handbooks

Alt Ed Program

Ed. Diag.

Network

Custodians

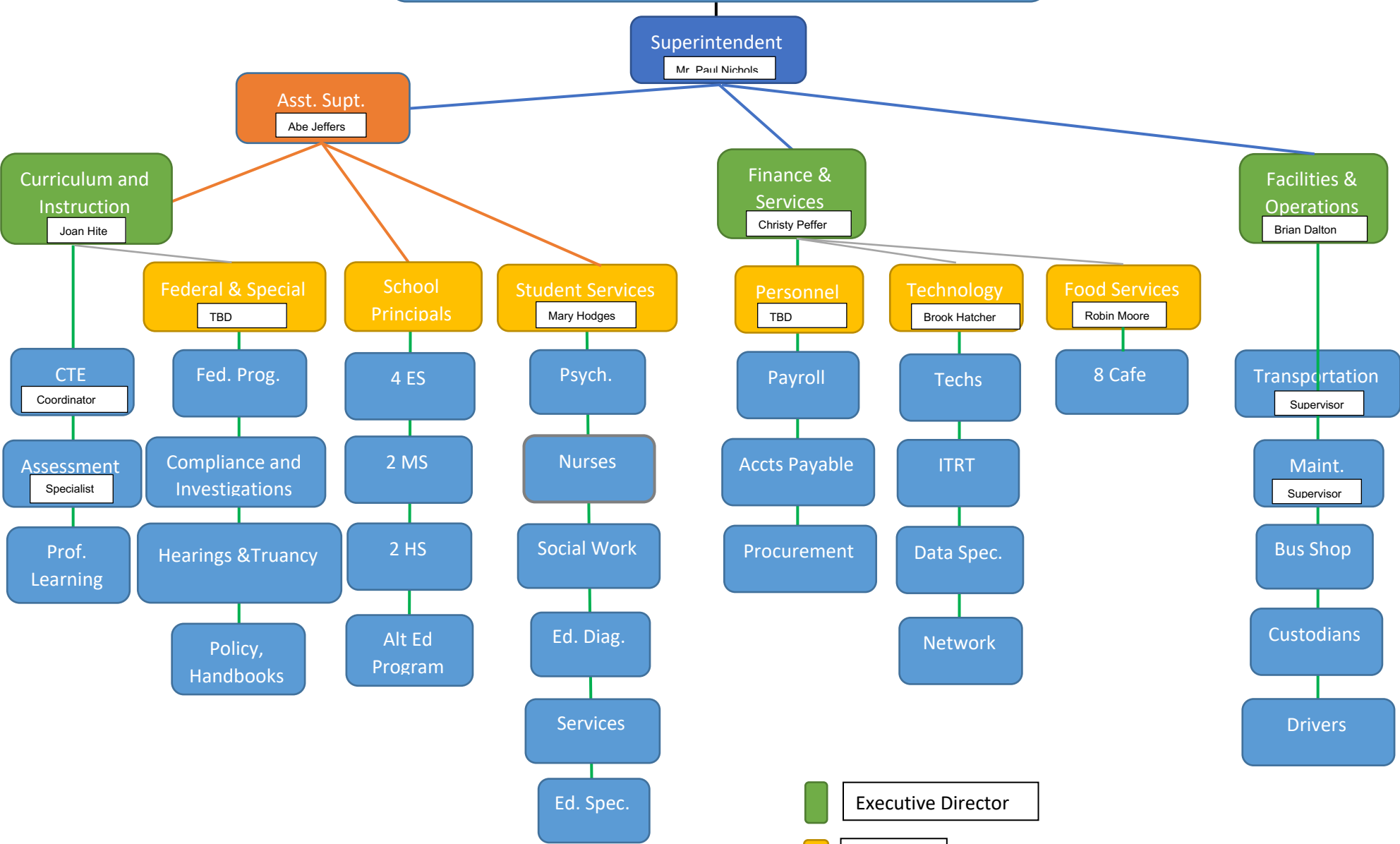
Services

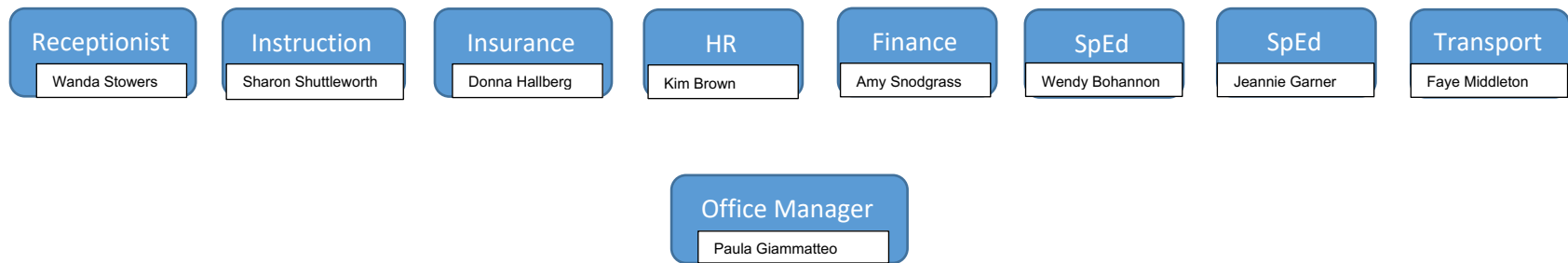
Ed. Spec.

Drivers

Executive Director

Director





*Each administrative assistant is supervised and evaluated by their direct supervisor with input provided to them by the office manager.